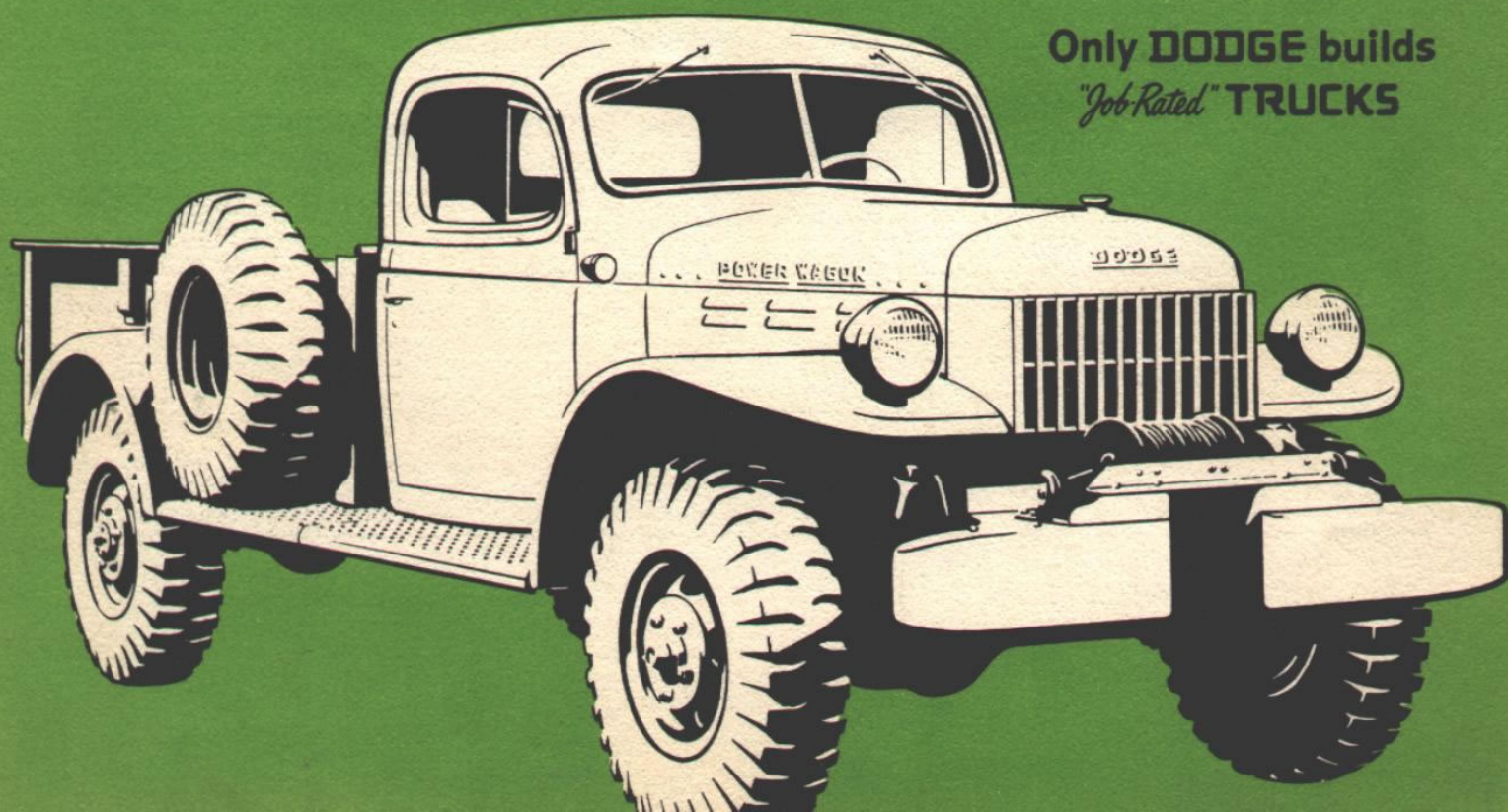


THE NEW
DODGE
4-WHEEL-DRIVE

POWER-WAGON

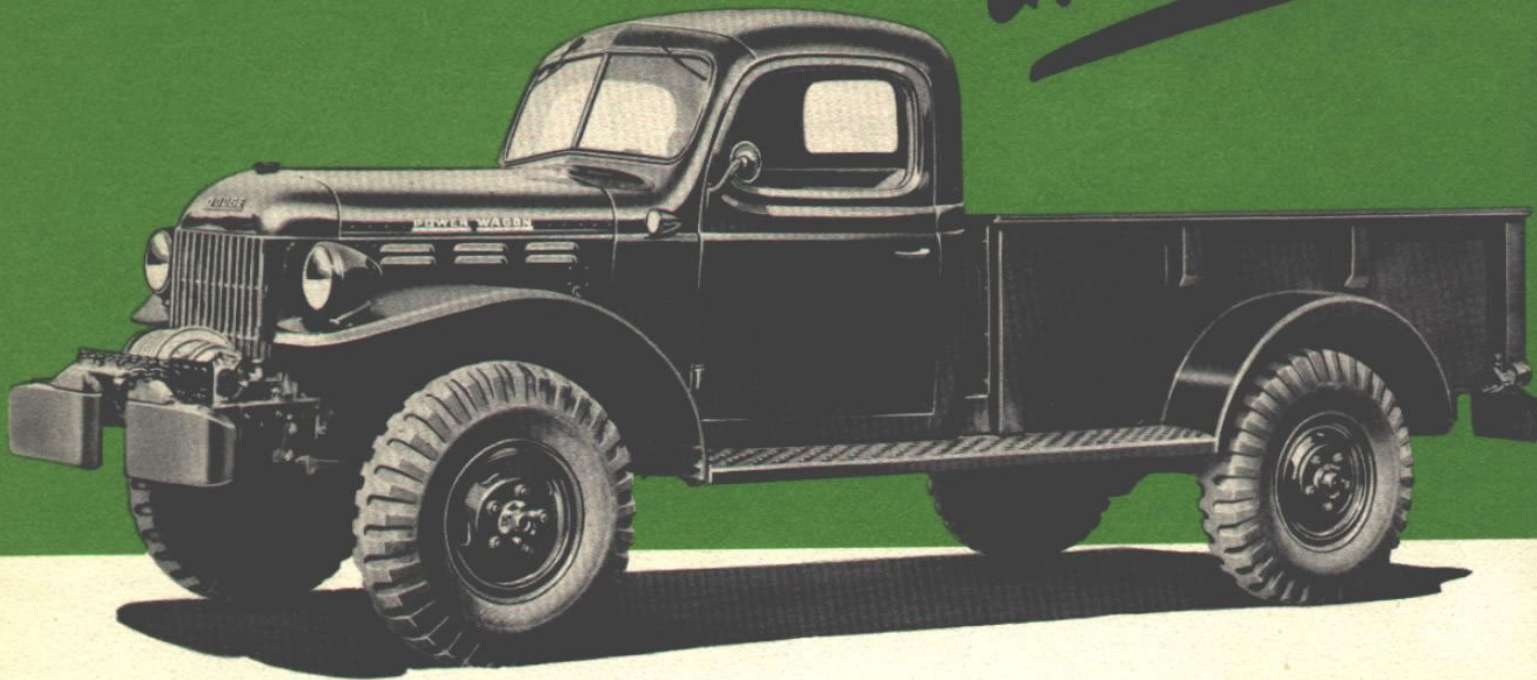
The truck that needs no roads!



Only DODGE builds
"Job-Rated" TRUCKS

The 4-Wheel-Drive Truck

*that's
different!*



Study- these many features and advantages

1 *Four-Wheel drive:* Great tractive ability for off-the-road operation . . . impossible with a conventional 2-wheel drive truck. For highway operation, front-wheel drive can be easily disengaged from within the cab.

2 *Eight forward speeds:* From regular 4-speed transmission and a 2-speed transfer case. They offer time-saving, flexible performance, and maximum engine efficiency.

3 *Power Winch:* Available for front mounting, provides 7,500 lbs. pulling or hoisting capacity. Complete with 250 ft. of $\frac{1}{16}$ inch steel cable, automatic safety brake, and throw-out clutch.

4 *Dual power take-off:* For front or rear operation. Provides power for a variety of on-truck and off-truck equipment. Functions at 61 $\frac{1}{2}$ % or 47 $\frac{1}{2}$ % of engine speed, depending on direction of rotation.

5 *Tail shaft drive:* Available for operation of a variety of auxiliary equipment. Can be governed at 536 r.p.m. or

Here's the truck that *needs no roads* . . . the truck of *1,001 uses* . . . the truck that's *different* . . . the Dodge POWER-WAGON.

It gives you TRACTION *when* you need it . . . PULL *as* you need it . . . and POWER *where* you need it.

It's really a *power plant* on wheels! By choice of the proper auxiliary equipment you can use it for many specialized tasks to do each of those tasks better. And you'll find that it's "*Job-Rated*" for operation under widely varying and extreme conditions.

Investigate the great versatility of the Power-Wagon . . . its adaptability to so many new uses. We're sure you'll agree with thousands of users "there's no truck anywhere like the Dodge POWER-WAGON!"

other speeds if desired. Nine-inch pulley drive available for operating circular saws, silo fillers, pumps, and other belt-driven machinery.

6 *Mechanical governor:* Provides constant engine speed for power operations when needed. Conveniently controlled over a wide range of settings from inside the cab.

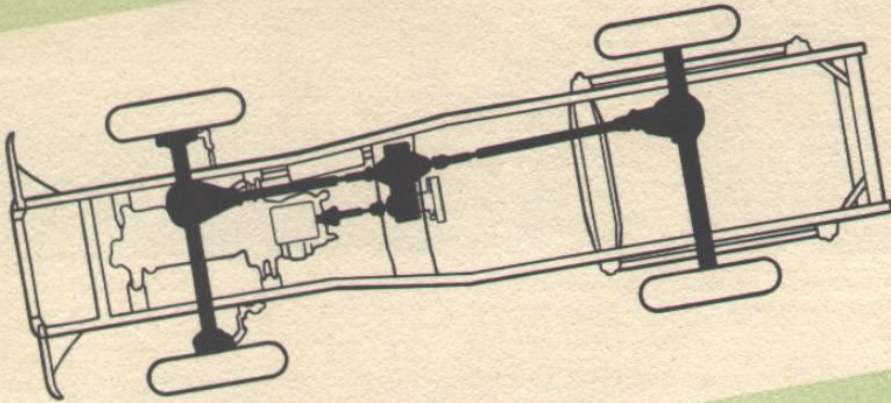
7 *Tow hooks:* May be mounted on front of frame. Convenient for a variety of dragging or pulling operations.

8 *Pintle hook:* Available for mounting on the rear frame cross member. Adaptable for towing equipment with towing eyes, chains, or cables.

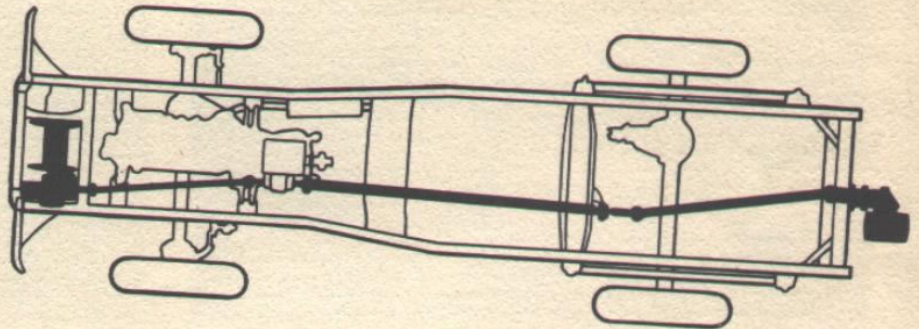
9 *Full-size enclosed cab:* Wherever you drive a POWER-WAGON, you drive in comfort. Safety-steel cab comfortably accommodates three adults . . . offers safe vision and driving convenience.

10 *Large express body:* 58 cu. ft. load capacity. Durable hardwood floor, protected by steel skid strips. Hinged tail gate has chain and hook and eye fasteners.

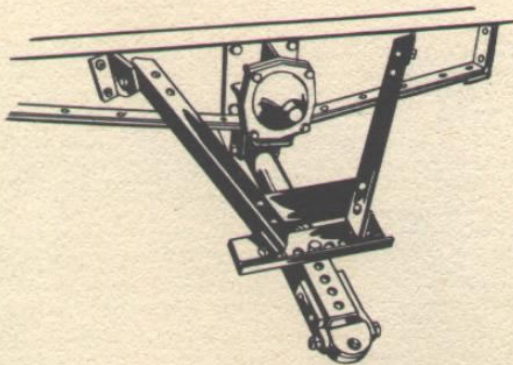
"Job-Rated" for an amazing range of HAULING, PULLING, and POWER Jobs!



Engine power is delivered at front and rear for operating the winch and for driving auxiliary equipment. Tail shaft is similar in design to husky tubular propeller shafts; roller bearing mounted to reduce friction.



Engine power flows to all four wheels to give tremendous rim pull at all four wheels. Gradeability ranges from 5.1% in high to 121.3% in low! In low range, the total reduction is 73 to 1! That's why the POWER-WAGON can go almost anywhere . . . do almost anything. Road speeds up to 65 m.p.h. are readily available . . . save time when you really want to move.



Where equipment must be towed with towing eye, chain, or cable, this adjustable draw bar, rear mounted, improves towing performance. It is adjustable up or down to compensate for different height of equipment to be towed. Or, it may be adjusted sideways for off-center towing.

Seldom do you see a product that so completely lives up to its name as the Dodge POWER-WAGON!

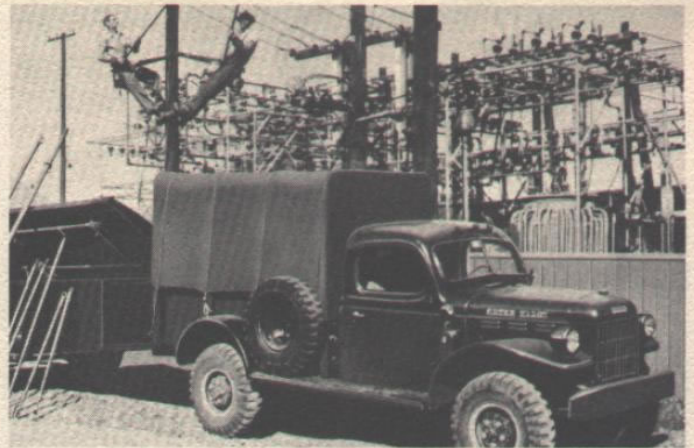
With power at all four wheels . . . with power take-off delivery front and rear . . . with winch, tail-shaft pulley, draw bar, towing hooks, and pintle hook available . . . the Power-Wagon is designed and built to provide power for an amazing range of specialized jobs.

In the following pages, observe the many applications of Power-Wagon power. Review the details of cab comfort, engine performance, chassis features, and specifications. Then, ask your Dodge dealer to show you how a Dodge POWER-WAGON fits your needs.

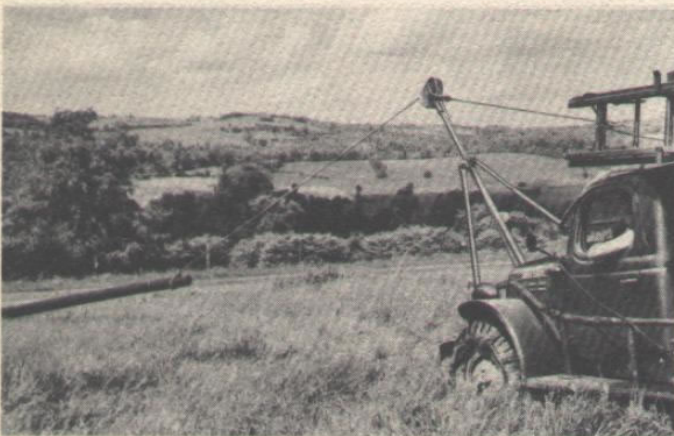
Just right for public utilities . . .



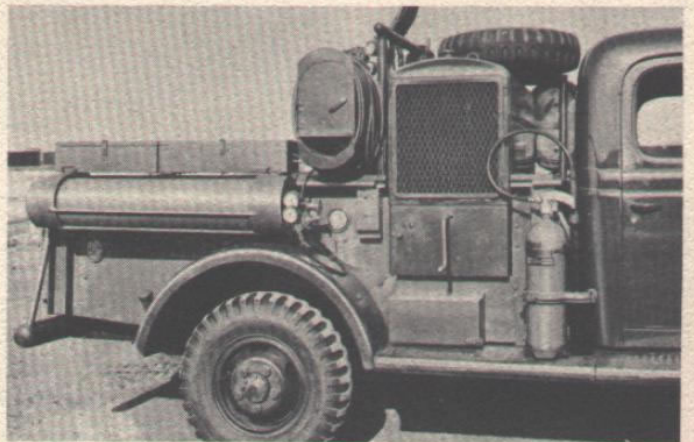
Hole drilling. Front end mounted drill expedites pole hole drilling in out-of-the-way places. Operator has clear vision from cab.



Electrical sub-station repair crews find the POWER-WAGON ideal as a mobile repair unit.



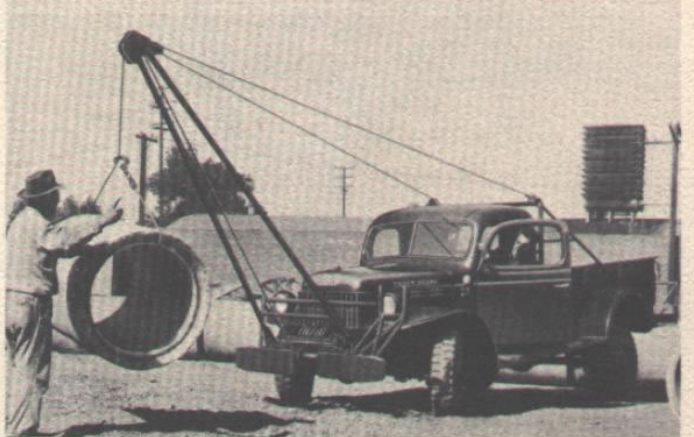
Pole dragging. Power winch makes quick, easy work out of dragging utility poles into position near drilled holes.



Complete welding equipment and compressor may be mounted on the POWER-WAGON and operated at off-the-highway locations.



Pole placement. Utilizing drill tripod and power winch, poles are raised and placed in pole holes.



With winch and hoist, concrete pipe is easily lowered into position . . . even in difficult-to-reach locations.

Goes where other trucks can't go . . .

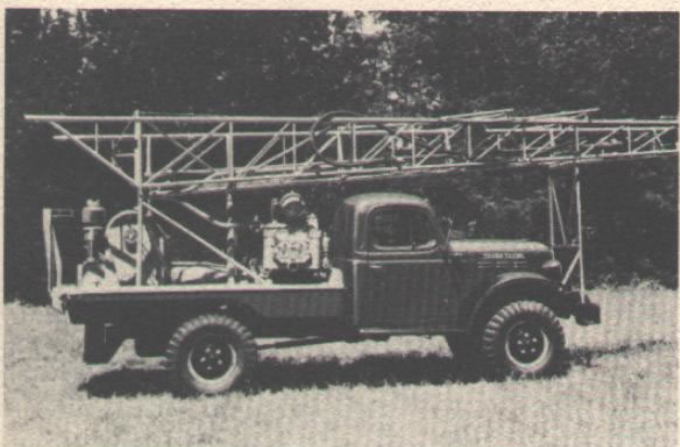
... and the oil fields, too!



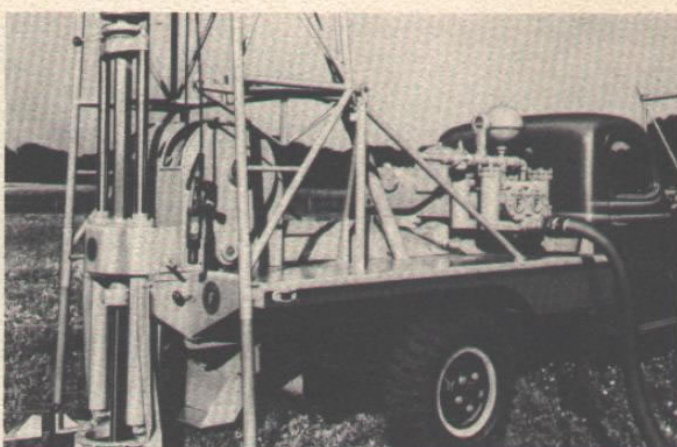
Power-Wagons, in this seismic exploration fleet, "go where other trucks can't go . . . do what other trucks can't do."



Recording instruments are carried safely from place to place in the easy-riding POWER-WAGON.



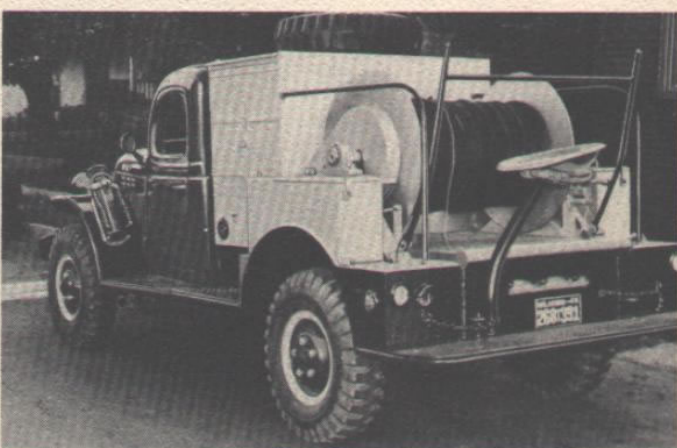
A well-balanced rig on a well-balanced truck. Shot hole drill equipment, mounted on the POWER-WAGON.



Hydraulic ram is placed in position for drilling quickly and easily . . . with all facilities available.



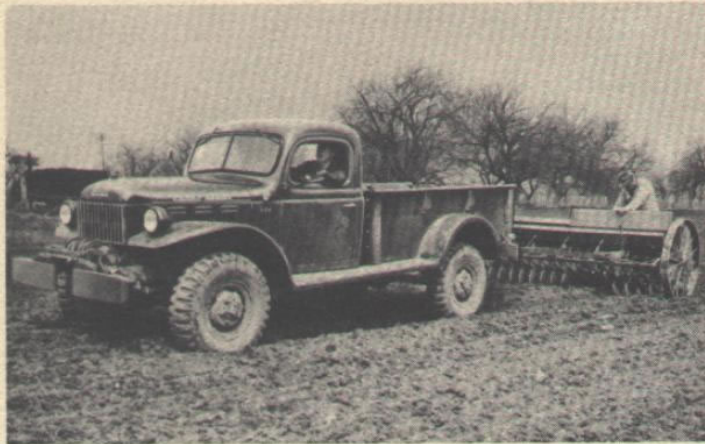
"Explosive" truck is always part of the seismic exploration fleet. Ability to move right up to location eliminates rehandling of explosives.



Water tanks, personnel carriers, and other special bodies are mounted on the POWER-WAGON chassis.

... does what other trucks can't do!

On the farm . . . the great new



Power-Wagon, towing a planter, speeds up vitally important farm planting operations.



Buzz saws and saw mill equipment are operated with belt from pulley, mounted on tail shaft of the POWER-WAGON.



The ability of the Power-Wagon to go "anywhere" . . . and to pull large loads is valuable at hay harvest time.



Orchard spraying equipment operating with Power-Wagon power, is moved close to trees for fast, efficient spraying.



Ensilage cutting equipment . . . in fact, various types of farm machinery can be driven from the POWER-WAGON power take-off.



Stones or tree stumps are easily dislodged, loaded and transported with the POWER-WAGON.

Let's discuss how we can equip a POWER-WAGON

POWER-WAGON can do many jobs



Installation of fence is simplified . . . particularly where the ability to travel through fields is of value.



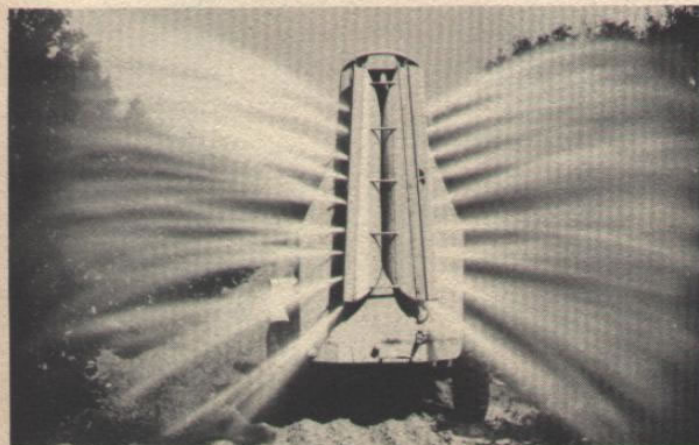
Grading and filling . . . with loose earth . . . is another Power-Wagon operation in which 4-wheel traction is important.



Lifting and hoisting of various types of farm equipment . . . light and heavy . . . is accomplished easily and quickly.



Distribution of hay to herds, formerly accomplished only with horse-drawn equipment, is a fast, economical Power-Wagon job.



Power-Wagon flexibility and traction are ideal for transporting special equipment, such as this orange tree spraying unit.



Another example of feeding of range cattle with the "truck that needs no roads."

to do your truck jobs better and more economically

Wherever the work is rough and tough . . .



Well-drilling. The POWER-WAGON moves right up to the job . . . anywhere. Provides plenty of power for the drill.



Service trucks. For wrecker service the POWER-WAGON with hoist and winch equipment is unequalled.



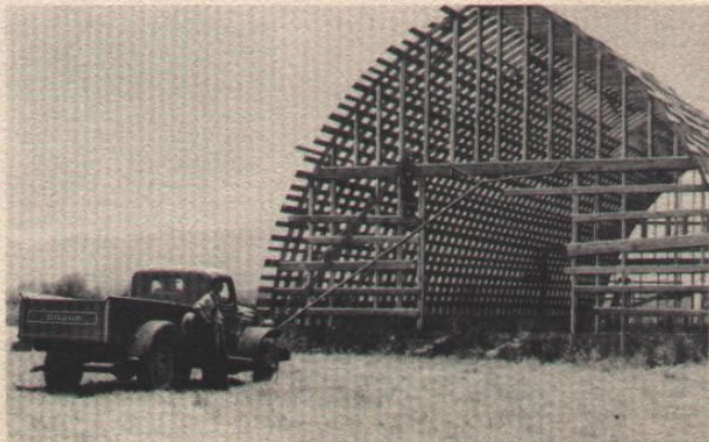
Street sweeping. Rotary sweepers are conveniently installed on the front of the POWER-WAGON.



Erecting steel. Front end winch raises steel building sections easily and conveniently.



Snow clearance. Where 4-wheel traction counts most, the POWER-WAGON has the required "push."



Construction work. The POWER-WAGON brings a "power plant" right to the job . . . for many moving, hoisting, and pulling operations.

Put the POWER-WAGON to work today . . . do

you'll find a Dodge "Job-Rated" POWER-WAGON



Tree planting. Rough terrain presents no problem to the POWER-WAGON on this job.



School buses. No roads too tough for a POWER-WAGON school bus. Plenty of power and plenty of road speed.



Spreading fill. Plenty of power for the toughest jobs . . . with efficient, economical operation.



Railroad car movement. The husky POWER-WAGON does a shift-engine job on private sidings.



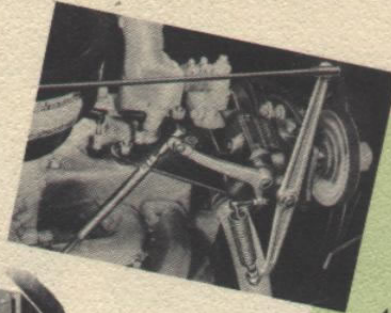
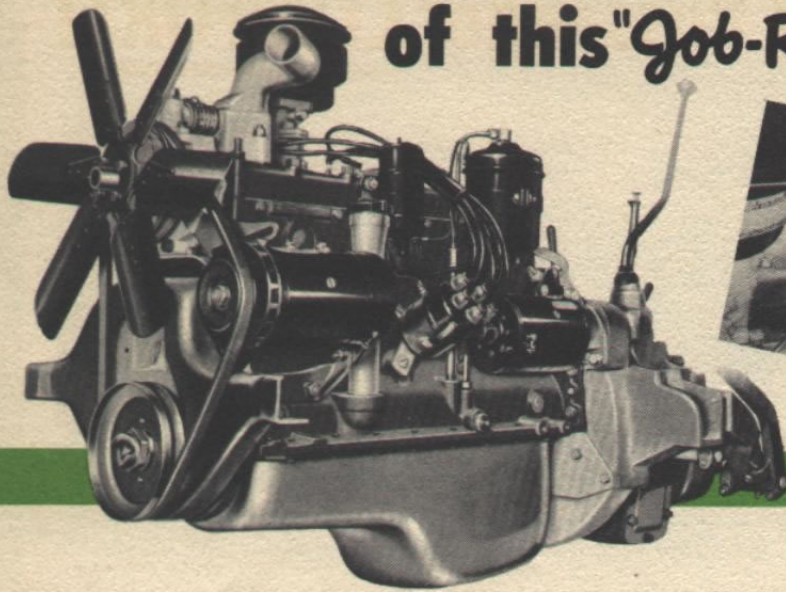
Fire trucks. Four-wheel drive on the flexible POWER-WAGON takes them where they're needed. Unmatched for forest fire patrol and control.



Lumber hauling. Stake and special bodies permit the POWER-WAGON to be used in a wide variety of lumber operations.

your tough jobs this modern efficient way!

Profit from the POWER and ECONOMY of this "Job-Rated" Power Plant!



Governor Provides Constant Engine Speed for Power Operations

A special mechanical governor is available for use with the rear pulley drive . . . or in conjunction with auxiliary equipment with auxiliary drive through the tail shaft. Adjustable through a wide range of settings.

Here's the POWER-WAGON'S efficient L-head engine.

It's built for continuous, gruelling work . . . proved through years of commercial service . . . an engine that lives up to the name of this remarkable truck.

It provides ample power for difficult off-the-road operation . . . for towing other vehicles and equipment . . . and to operate a variety of power driven machines. Rated at 94 gross horsepower with a maximum torque of 186 foot-pounds.

Full-pressure lubrication, with floating oil intake and roto-pressure oil pump, combined with positive crank case ventilation, contribute to economical performance and long life.

Full-length water jackets, a 395 sq. in. radiator area, centrifugal water pump, and water distributing tube assure cool operation under the most gruelling conditions.

The crankshaft is statically and dynamically balanced for precision operation. Pistons are light-weight aluminum alloy with four rings to each piston. Exhaust valve seats are special heat-resistant alloy inserts. Every detail is designed for power, performance, and economy.

You're sure to profit from these many features. Drive a POWER-WAGON and experience its outstanding performance.

Match a POWER-WAGON to your job . . . TODAY!

Profit, too, from the Quality and Economy

All components of the POWER-WAGON chassis are "Job-Rated" for the work this unusual vehicle is designed to do.

Extra rugged frame side rails of channel design guard against breakage and provide a sturdy foundation. The channel type front bumper is actually a part of the frame.



Rugged POWER-WAGON
frame construction.

It serves as an additional cross member, adding strength to the front end. The box-section front cross member is enclosed on all sides to give extra support to the engine and winch.

Center cross members are reinforced for extra strength. Both front and rear axles are full-floating type. The load is carried on the housing and not the axles. Both are designed to withstand the severe punishment of off-the-road operations. Both feature extra strong, quiet running, hypoid gears.

Powerful hydraulic brakes, with stepped cylinders and 210 sq. in. of braking area, stop the Power-Wagon quickly and safely. Parking brake is absolutely independent, acting